



TIM Solutions


Let your work flow

Digital Process Automation made easy

TIM Solutions in facts and figures



Founded in
2007



98%
customer satisfaction




A **100%**
family-owned business



+280.000
licences sold



+500 companies
worldwide count on TIM

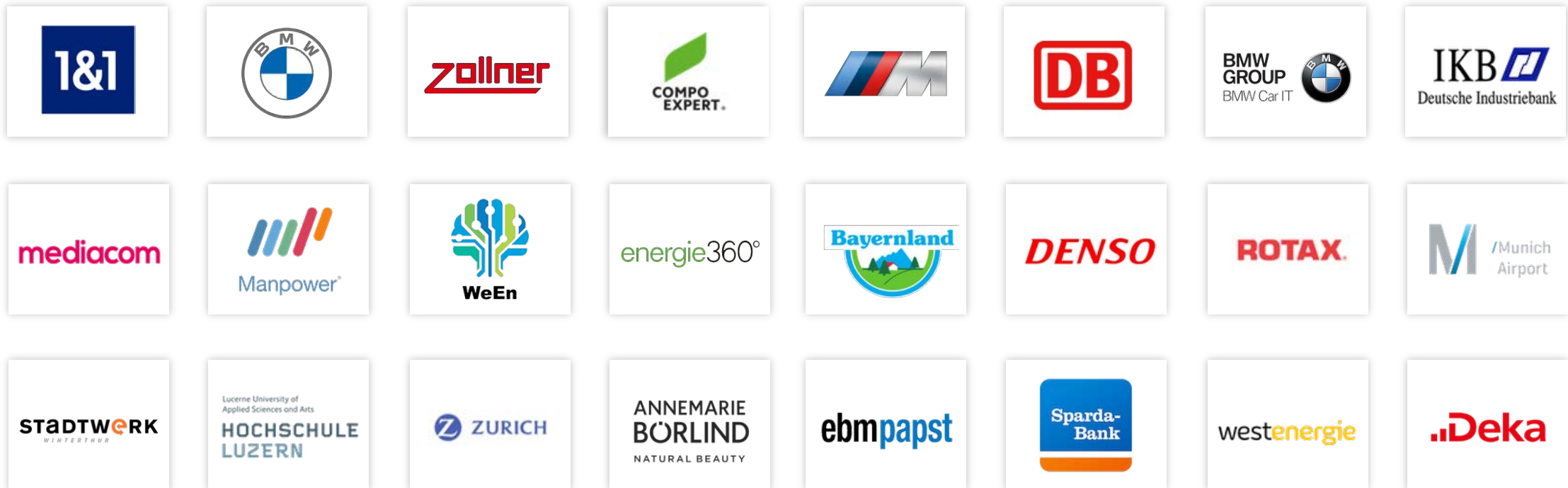


More than **300**
different process topics

Proud of our strong customer base



Over 500 companies in 74 countries count on our unique software solutions. In this context, we have realized more than 400 projects with our well-known customers. Here is an excerpt from our customer list:



Savings / ROI



DYNAMIC CHANGE MANAGEMENT



26.160 h savings per year
≈ **66%**
cost saving compared to other
workflow solutions



EVALUATION PROCESS, PERSONNEL PROCESS AND TOOL TRACKING



Estimated:
1.400 h
time saving per year



PRODUCT DEVELOPMENT PROCESS



Several
thousand h
time saving per year



DEUTSCHE BAHN



Global booking requests for
subsidiaries
Worldwide centralization from
350 to **3** locations



SPECIAL REQUEST MANAGEMENT



1 process run to
achieve ROI

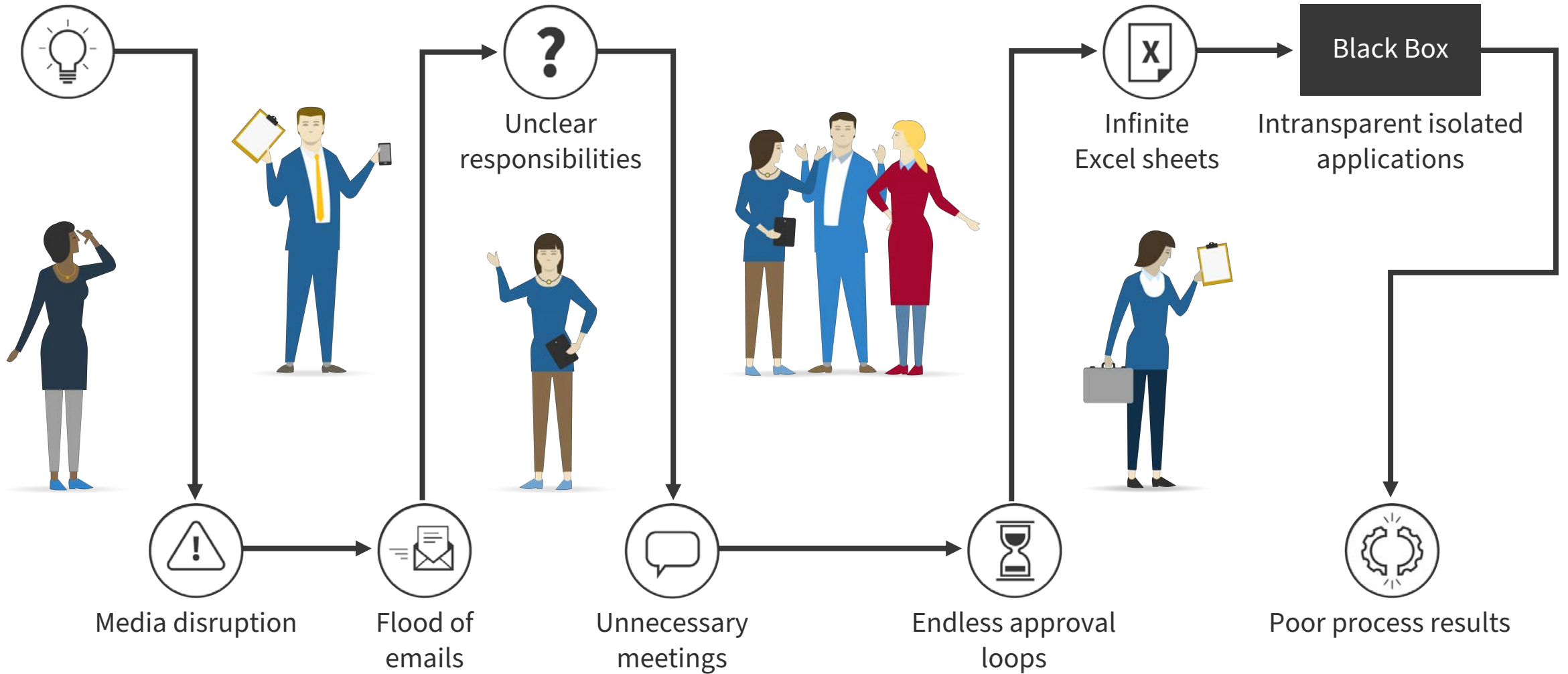


PAYROLL ADJUSTMENT

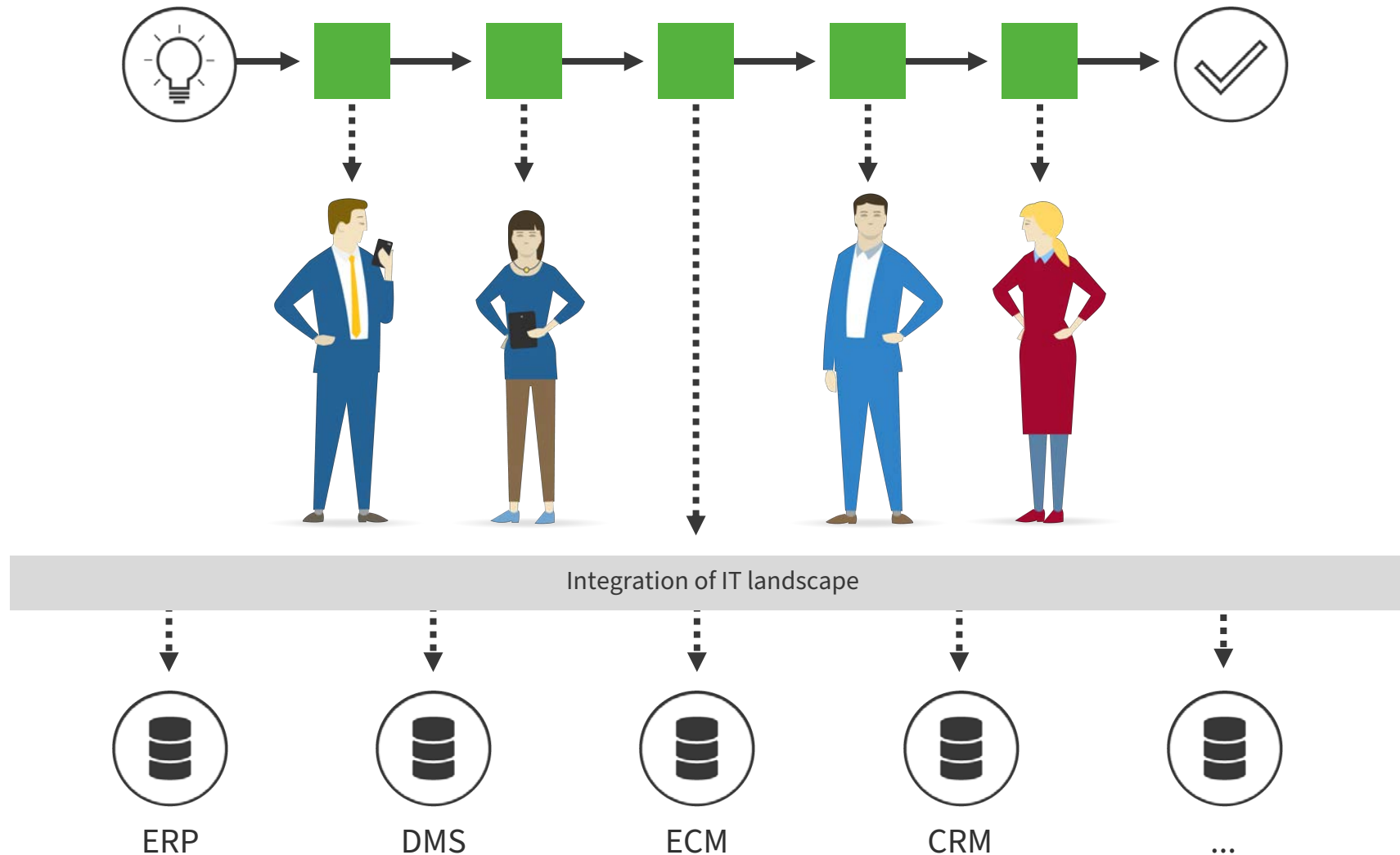


after only
6 months
ROI achieved

Without TIM: Typical Business Process Flows



TIM Philosophy

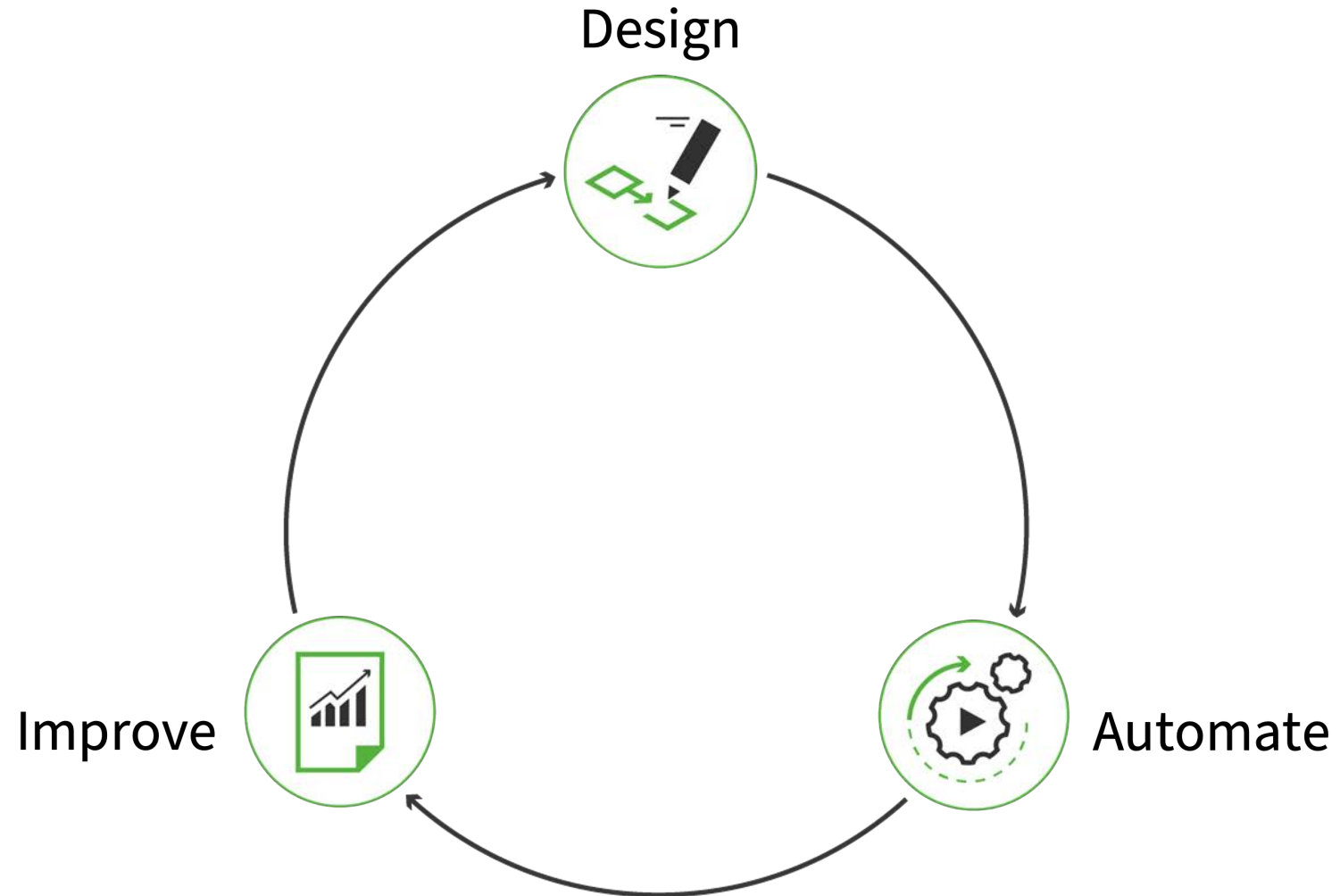


Structured workflows

Involvement of process participants

Integration of existing IT landscape

Workflow Lifecycle



Form Design with TIM



Web-based
form editor



Simple configuration of
rules and logic



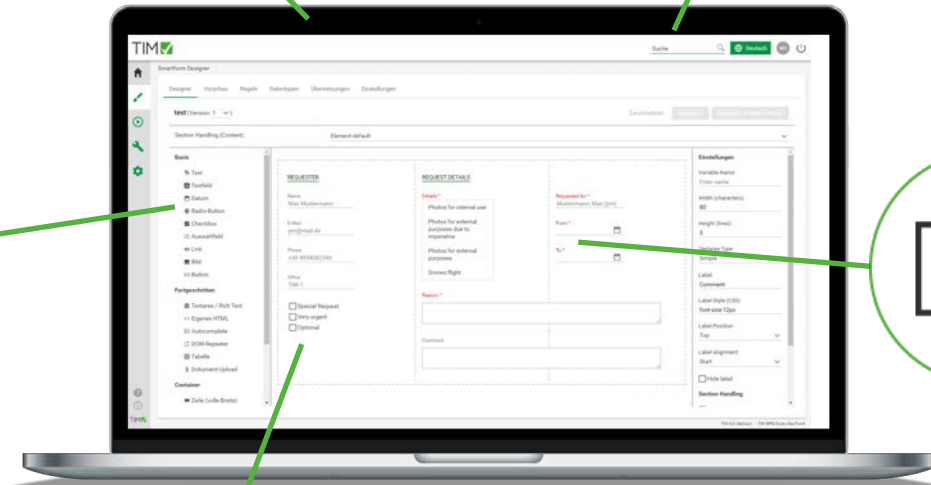
Simple adaptation
per process step



Preview mode



Revision-proof change
history



Automate



Process control –
Acting instead of reacting



Automatic escalation to
meet deadlines



Structured
completion of
all processes



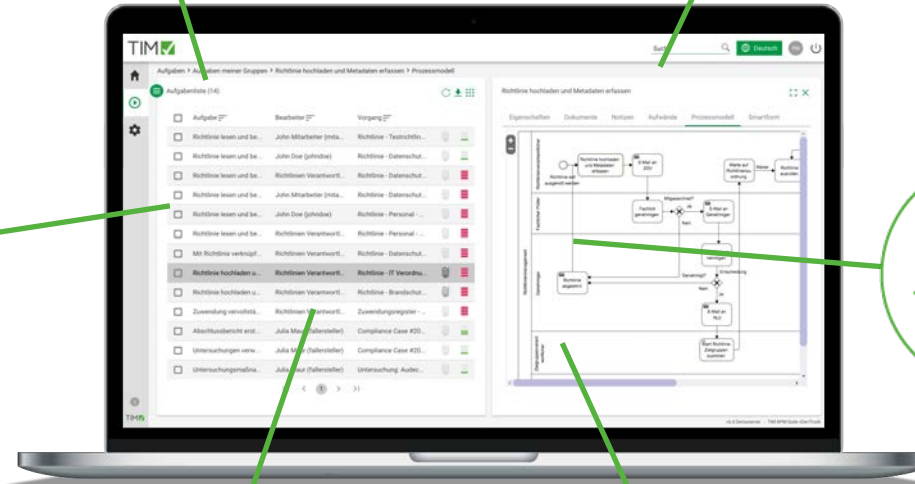
Traceability of all
processes



Identification of
bottlenecks



Adherence to schedules for the benefit
of all participants in the process



Improve

Monitoring of all processes



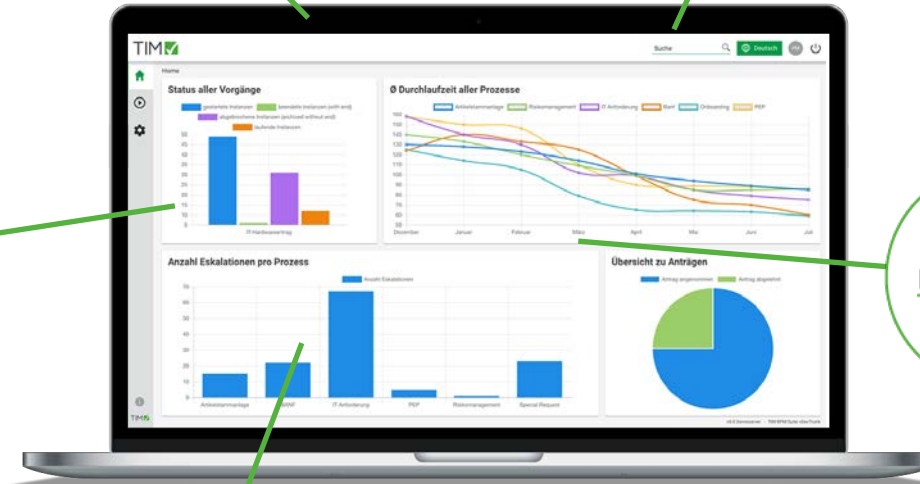
Target-performance comparison



Identification of weak points



Live evaluation of individual key figures



Verifiability through audit-proof documentation



Success Story Deutsche Bahn

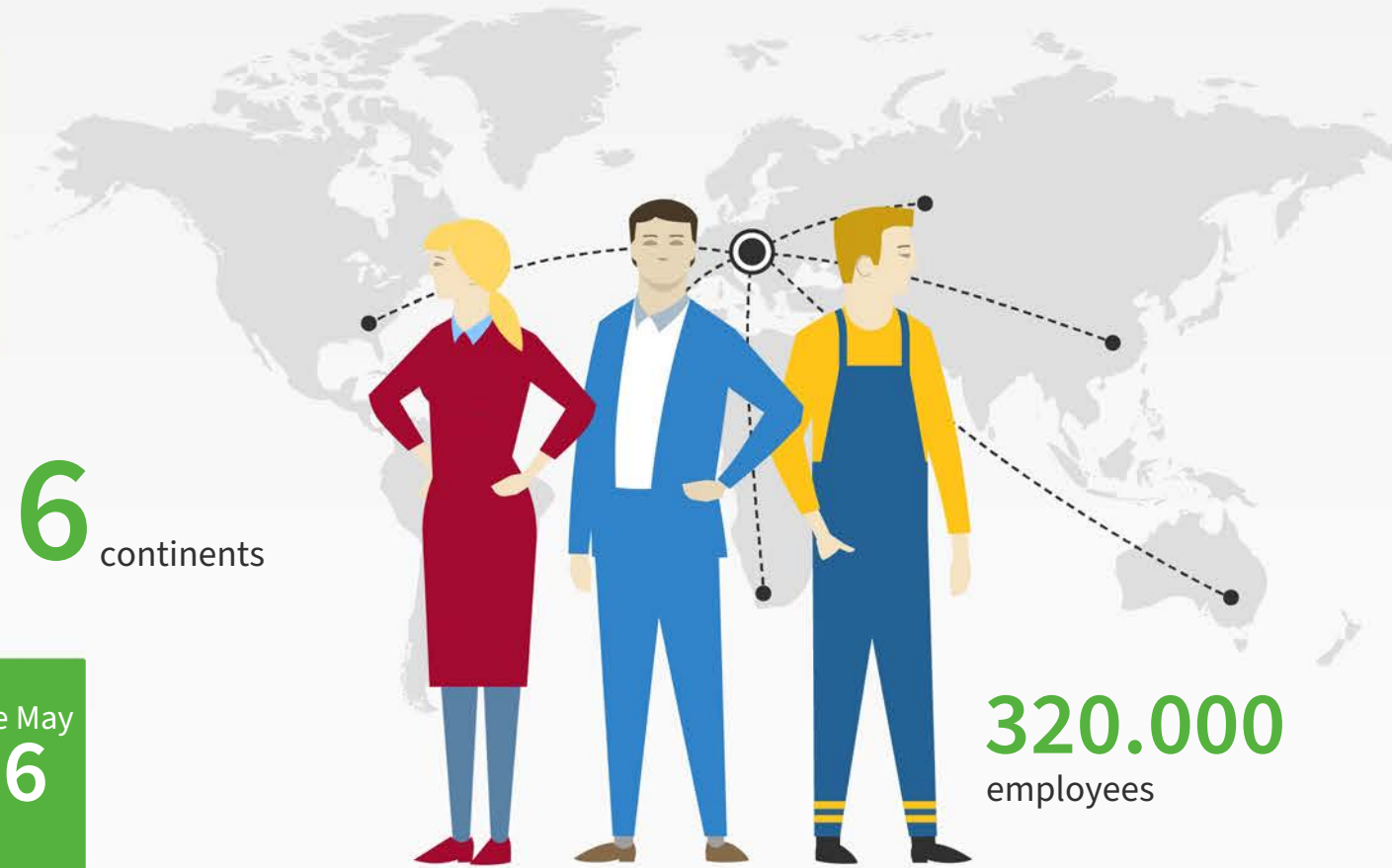


Global Booking Requests for Subsidiary Companies

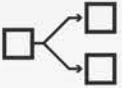


TIM is deployed in


48 countries on **6** continents

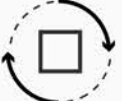


320.000
employees

 **25**
different processes

 **22.000**
users

 **250.000**
completed tasks
per month

 **80.000**
process instances
per month

Success Story DB Cargo



DB Cargo: International Special Train Planning



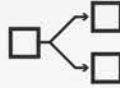
TIM is deployed in

15 countries and


45 transport companies




30.000
employees

 **172**
different processes

 **1.350**
users

 **25.000**
completed tasks
per month

 **9.500**
process instances
per month

Success Story Deutsche Bahn Overall



All TIM Processes with Deutsche Bahn

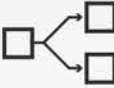


TIM is deployed in


49 countries on **6** continents




320.000
employees

 **207**
different processes

 **24.000**
users

 **280.000**
completed tasks
per month

 **90.000**
process instances
per month

Success Story BMW GROUP



Development Processes



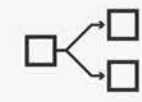
1.400

hours time saving
per year



133.000

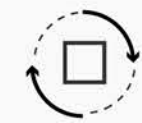
employees



6 different
processes



200
process participants



3.200
process runs
per year

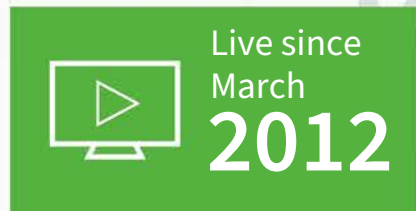
Success Story Munich Airport



Risk Management and further operative processes




40% Time saving
reduction of coordination effort and
lead times



 **7** different
processes

 **7.600**
employees

 around **50**
users parallel on
the system

Success Story 1&1



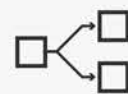
Coordination of Marketing Campaigns and Approval Workflows




 **6.000**
employees

 Live since
December
2013



 **30**
different processes

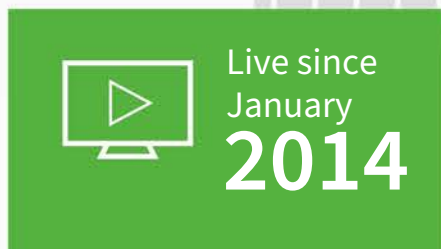
 around **90**
users parallel on
the system

 **2.200**
process instances
per year

Success Story DENSO



Product Development Process and Approval Workflows



 **3** different processes

 several **thousand** hours time saving per year


 **130.000** employees

Success Story Zollner



Change Management Workflow



 **784.800**
Euro savings per year


 Live since
July
2012



 **1** standardized process

 **> 900**
changes per month

 **3.700**
users

 **6** different languages

Success Story Lucerne University (HSLU)



Advanced Education Applications Workflow



Amortization within

1 year



Savings around

700 work hours
per year



1.200
process instances

Human Workflows achieve the top 5 goals of BPM



1. Cut costs

Through automated activities, shorter lead times and more effective processes



2. Increase transparency

The status of all relevant processes is always visible, filterable and sortable



3. Harmonize and standardize processes

Processes run 100% according to standard, daily execution shows optimization potential



4. Improve quality

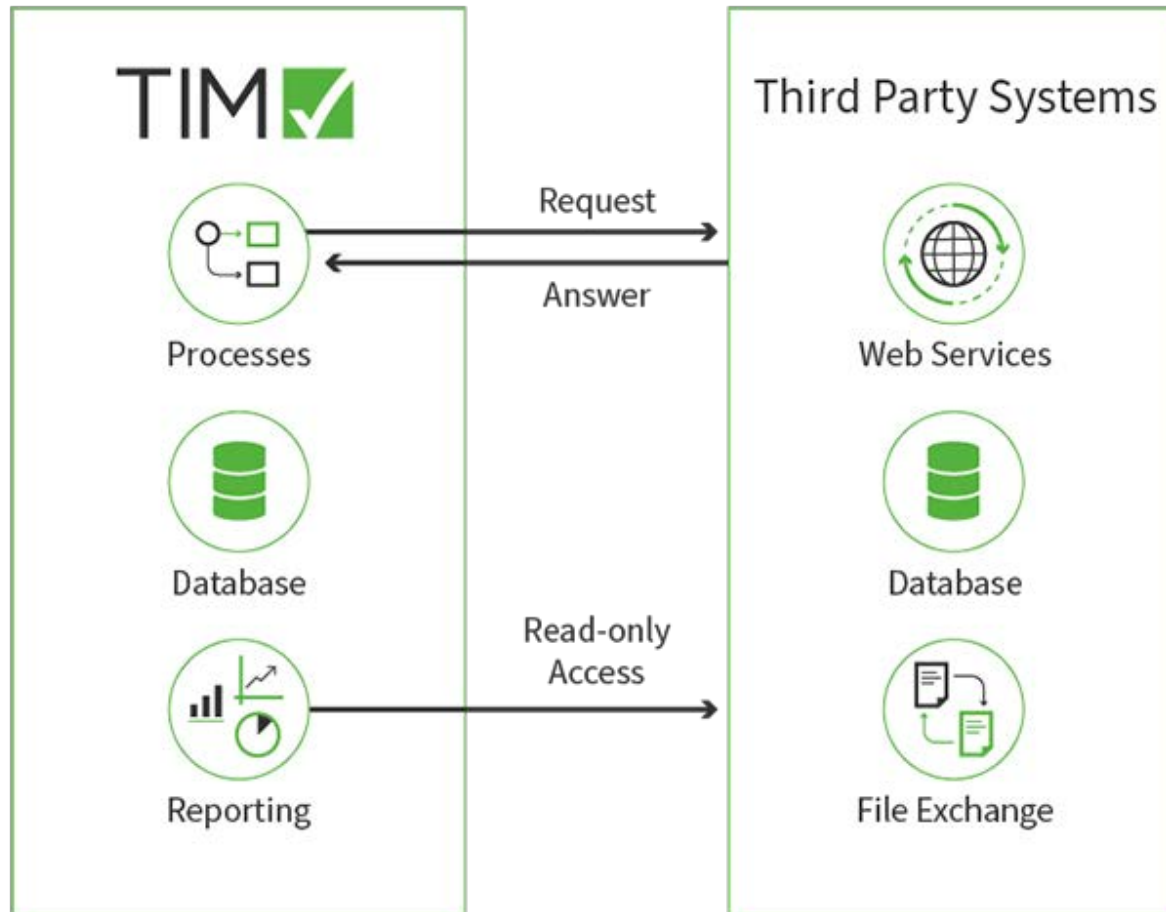
Mandatory fields, validations and selection lists improve data quality



5. Digitize processes

Human workflows are digital and integrate other systems

Integration of Third Party Systems



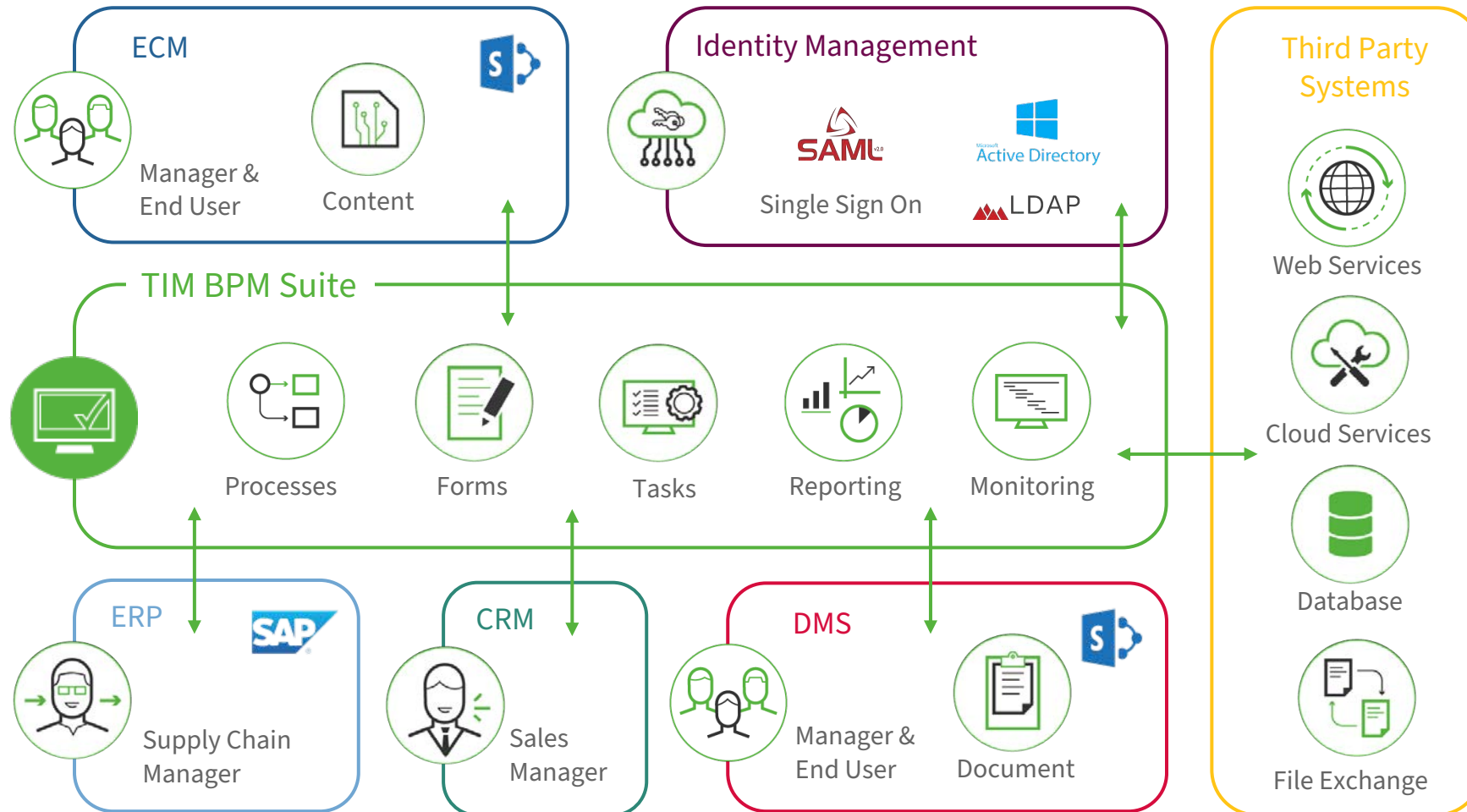
With these interfaces, it is possible to:

- provide information from the workflow to third party systems
- read information from third party systems and then process it further
- store information as master data, e.g. to fill selection lists in forms

Examples for standard interfaces:

- Webservices
- Direct Database Exchange
- File Exchange
- E-Mail Integration

Digital Process Automation with TIM



Intelligent Process Automation



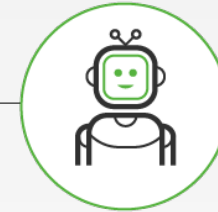
TIM Connectors

Our connectors seamlessly integrate external data sources from existing IT systems into your workflows.



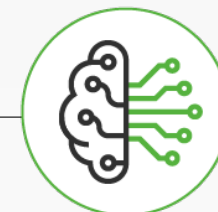
Process Participants

TIM not only realizes technical links, but also creates connections between people, departments and organizations.



Robotic Process Automation (RPA)

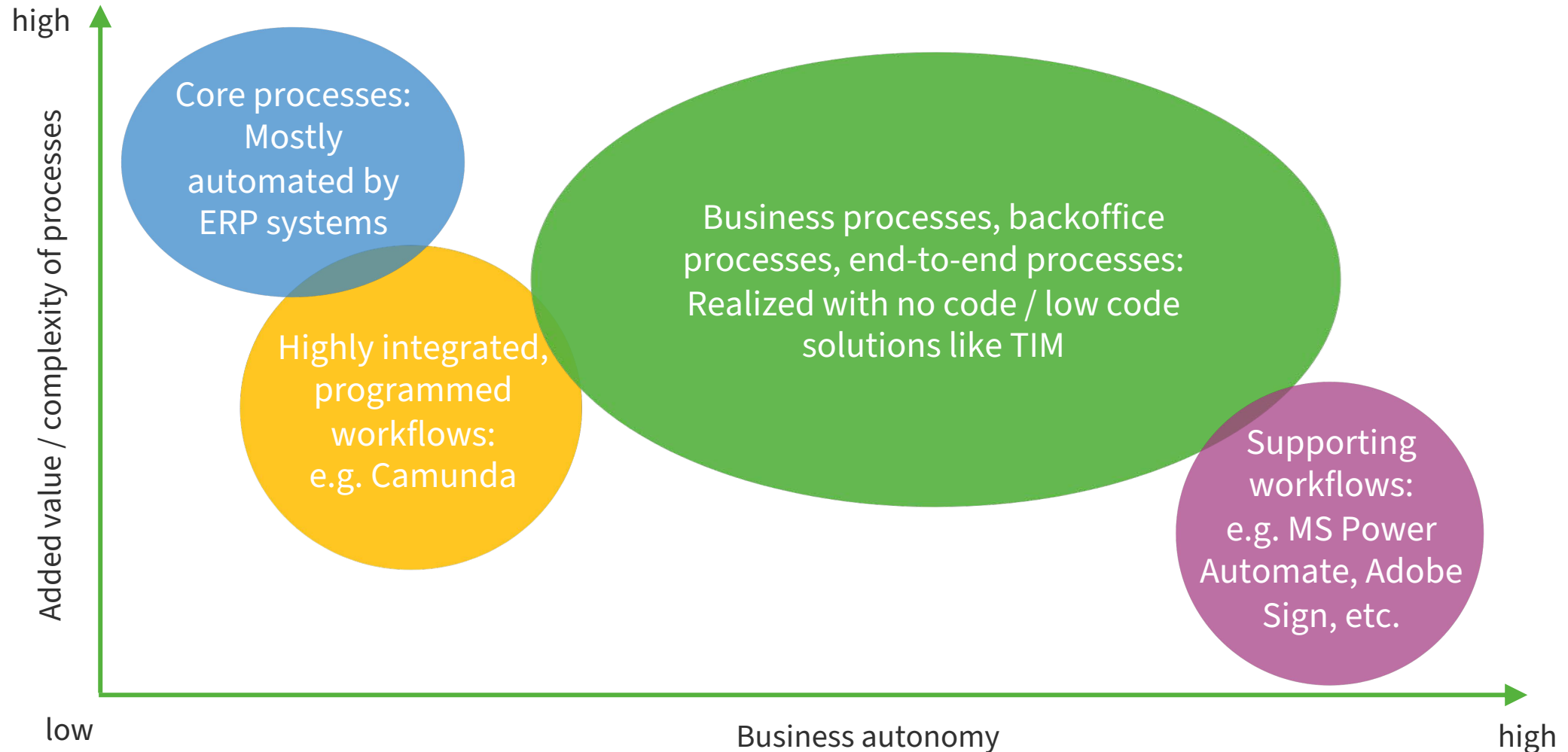
Combining TIM with RPA enables an efficient link of third-party systems through TIM orchestrating all workflow-relevant robots.



Artificial Intelligence (AI)

TIM uses algorithms based on empirical values for automated approval processes or automatic form filling, for example.

Workflow types and their area of application



TIM as a No-Code DIY Solution



The Tanker

- Heavy-duty IT system
- Expensive and difficult to customize and update
- Expensive to maintain
- Long project runtimes
- Many dependencies on internal IT or external consultants
- Examples: ERP systems, SAP, etc.



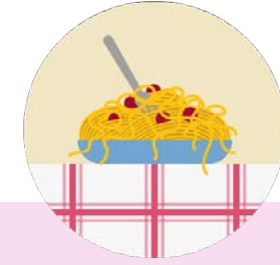
Lonely Island

- IT system that can only be used in one area
- Almost impossible to modify
- Only superficial modifications possible
- Expensive and difficult to customize and update
- No interfaces
- Example: HR systems



DIY Solution Kit

- ✓ From no-code to low-code
- ✓ Universally deployable
- ✓ WYSIWYG-Editor
- ✓ Many expansion options
- ✓ Easy to update
- ✓ Independent from IT
- ✓ Configurations make it easy to modify
- ✓ Example: TIM ✓



Spaghetticode

- Code only
- Universally deployable
- Considerable dependency on internal IT or external consultants
- Hard to maintain for the long-term
- Expansions often fail even before implementation



1. Platz

Process Solution Award 2019

Kategorie

Workflowmanagement

gesellschaft für organisation e.V.

St. Augustin, Mai 2019





TIM Solutions

Parkring 29
85748 Garching bei München

P: +49 89 5404 596-00

F: +49 89 5404 596-09

info@tim-solutions.de